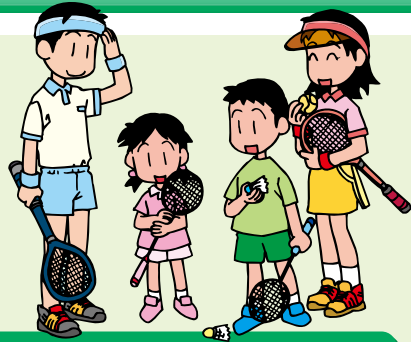


TAKETOYO

Taketoyo Town Map



Sports and Parks



Town Gymnasium

MAP H-6

総合体育館

A general sports facility for sports such as badminton, basketball, table tennis, judo, kendo and a training room.

- **Location** 128 Aza-Shimizu Oaza-Higashi-odaka Taketoyo town
- **Business Hours** 9:00 a.m. to 9:00 p.m.
- **Closed** Monday and the New Year holiday periods.
* Open on Monday if it is a public holiday.
- **Information** Phone: 0569-72-1114



Athletic Park

MAP K-5

運動公園

There is a multipurpose sports field for baseball, football, etc. and a tennis court (artificial turf). The park is surrounded by nature.

- **Location** 1-3 Aza-Kubara Oaza-Fuki Taketoyo town
- **Business Hours** 9:00 a.m. to 5:00 p.m.
* Also available in the early morning and night time.
- **Closed** Monday and the New Year holiday periods.
* Open on Monday if it is a public holiday. In this case, it is closed on the next day.
- **Information** Phone: 0569-73-5900



Nagoya City Outdoor Recreation Center in Taketoyo

MAP D-4

名古屋市武豊野外活動センター

- **Location** 64-46 Aza-Shimoyamanota Taketoyo town
- **Information** Phone: 0569-72-0215

Nature Park

MAP K-2

自然公園

There are many trees and various animals and plants. An observatory commands a panoramic view of Mikawa Bay and Ise Bay. A lot of people enjoy the outdoors here on weekends.

- **Location** Aza-Kamibesso Oaza-Fuki Taketoyo town
- **Information** Town Planning Section (Toshi Keikaku-ka) of the Town Office
Phone: 0569-72-1111



Pond-Parks

親水公園

There are many reservoirs in Taketoyo. Kagari pond, Asari pond, Kumano pond and Besso pond are kept as parks. You can enjoy walking around the reservoirs and watching birds.

- **Information** Town Planning Section (Toshi Keikaku-ka) of the Town Office
Phone: 0569-72-1111

Asari Pond Park (Asari ike koen)
アサリ池公園 MAP E-6



Kumano Pond Park (Kumano ike koen)
熊野池公園 MAP H-6



Kagari Pond Park (Kagari ike koen)
鹿狩池公園 MAP C-6



Besso Pond Park (Besso ike koen)
別普池公園 MAP J-3



Outdoor Recreation Center in Shinshiro City

野外活動センター

In 1984 Taketoyo joined with former Tsukude village to create an Outdoor Recreation Center where citizens can enjoy nature and improve their physical and mental health. The center is a place where people can discover the richness of life.

- **Location** 6 Aza-Teranoiri Suganuma Tsukude Shinshiro City
- **Information** Life learning Section, Board of Education (in Central Community Center)
Phone: 0569-73-2424



Yasuragi-no-mori Cemetery

MAP I-2

やすらぎの森墓園

- **Location** Aza-Otanimichi Oaza-Fuki Taketoyo town
- **Information** Town Planning Section (Toshi-Keikaku-ka) of the Town Office
Phone: 0569-72-1111

Tourist Attractions



Ichchoda meadow

MAP B-4

壱町田湿地



Ichchoda meadow is located in the north west of Taketoyo. There are 7 kinds of insectivorous plants such as hime-mimikagigusa, shirobana-nagaba-no-ishimochiso, etc. There are also meadow plants such as shiratama-hoshikusa. These plants are so botanically valuable that Aichi Prefecture has named them as natural monuments. This meadow is opened 5 days a year so that everyone can see these plants.

■ **Information** History and folklore Museum
Phone: 0569-73-4100

Gallery Yume-no-kura

MAP F-7

ぎやらりい夢乃蔵



You can see local goods at the antique building. Taketoyo Town's Society of Commerce and Industry has created a calm atmosphere with good taste at a corner of the Miyuki Street Shopping Arcade. Miso, tamari soy sauce, glass handiwork, and bread are for sale. There is also a tearoom inside this building.

■ **Location** 55-6 Aza-Dosaki Taketoyo town

■ **Operation Hours** 9:00 a.m. to 6:00 p.m.

■ **Information**

Gallery Yume-no-kura Phone: 0569-73-7883
Taketoyo Town Society of Commerce and Industry
Phone: 0569-73-1100

Storehouses of miso along the streets (Satonaka Area of Oashi district)

MAP G-7

みそ蔵のまちなみ (大足・里中地区)



If you enter some of the lanes west from Route 247, you can see the nostalgic townscape with storehouses (kura) clad in black timber. The town of Taketoyo has long been home to well-established miso (fermented soybean paste), and tamari soy sauce industries. There used to be 50 breweries in the town, and this Satonaka area was a central part of them. Five breweries continue to make miso and tamari soy sauce now, and this traditional townscape has been preserved.

■ **Information** Industrial Section (Sangyo-ka) of the Town Office
Phone: 0569-72-1111

Railroad Heritage (Train Turntable)

MAP G-8

旧国鉄転車台



They used this turntable to turn the railway cars. There's nothing like this turntable which has two rails crossing each other at right angles anywhere else now in Japan. That makes it a very precious heritage item of railroad culture. It was restored at the site of the Taketoyo-ko station, formerly Japanese National Railways in Dosenda, in 2002.

■ **Information** History and Folklore Museum
Phone: 0569-73-4100

Fuki Yacht Harbor

MAP I-7

富貴ヨットハーバー



East of the intersection of Fuki-station-west on Route 247. Although most of the coastal area is used for factories, this harbor and Taketoyo green area are rare places, which aren't used as industrial sites. About 80 yachts are berthed here.

Events Calendar

Events Calendar

Apr.

- Fuki Area Festival
(First Saturday and Sunday)
- Nagao Area Festival
(Second Saturday and Sunday)

May

- Central Community Center Festival (“Kominkan matsuri”)
(Fourth Saturday and Sunday)

Jun.

- Firefighter’s Skills Competition
(Second Sunday)

Jul.

- Oashi Area Festival
(Middle or end of July)
- Icchoda Meadow Opened to the public
(For about five days from July to September)

Aug.

- Home Town Festival (“Furusato Matsuri”)

Sept.

- Town-wide Clean Campaign
(First Sunday)
- Sports Festival Challenge Guinness World Record Sports Meet
(Beginning of September)

Oct.

- Culture Association Entertainment Festival (“Bunka-kyokai Geinosai”)
(Beginning of October)
- Sports Festival (“Sports Festa”) (Middle of October)
- Health Festival (“Kenko Matsuri”) (Fourth Sunday)

Nov.

- Citizens’ Cultural Festival (“Chomin Bunkasai”)
(Beginning of November)
- Library Festival (“Toshokan Festa”) (November third)
- Industry Festival (“Sangyo Matsuri”) (Second Saturday and Sunday)

Jan.

- New Year’s Fire Brigades Parade (“Shobo Dezome-shiki”)
(First or second Sunday)

Feb.

- Yumetaro Smile Marathon Race
(End of January or Beginning of February)
- Painting Exhibition (“Kaigaten”)
(End of February to beginning of March)

Mar.

- Welfare Festival (“Fukushi Matsuri”)
(Second Sunday)
- Fire Brigades’ Skills Review (“Shobodan Kanetsu-shiki”)
(Third Sunday)

Information about Taketoyo Town

Taketoyo Town is situated on the central portion of the Chita Peninsula on the eastern coast. The population of the town is 41,868 and the area is 25.81 km² (as of April 1, 2007).

The Town of Taketoyo has a long history as a port and because of the railroad (JR Taketoyo Line). In 1899, a port called "Taketoyo Port" was opened. This port and six other ports of cities and towns nearby were merged to form, "Kinuura Port" in 1957. They reclaimed land from the sea and constructed factories on it to make the foreshore into an industrial zone in 1960's. Mainly steel and scrap iron are exported to China, U.S., Singapore, and Malaysia from Kinuura Port. Coal, rice, and millet are imported from Australia, U.S., and China.

Two railroads, JR Taketoyo Line and Meitetsu Kowa Line run through the town and have four stations. JR Taketoyo Line is one of the most historical railroads in Japan. It was opened in 1886.

The traditional industries in the town center around the production of soy sauce, miso (fermented soybean paste), and the like. Since the climate is mild on the peninsula, rice and dairy farming, and modern agriculture such as flower (carnations) and vegetable cultivation have been developed. The new elements in the industrial base of Taketoyo include chemical products, glass, and pharmaceuticals.



Taketoyo Town Office

MAP F-6

武豊町役場

Location

2 Aza-Nagaoyama Taketoyo Town (Postcode: 〒470-2392)

Business Hours

8:30 a.m. to 5:15 p.m.

*Specified counters are open until 7:15 p.m. every Wednesday.

Closed

Sunday, Saturday, public holidays, and the New Year holiday periods.

Information

Phone: 0569-72-1111 FAX: 0569-72-1115



Fuki Branch of the Taketoyo Town Office

MAP J-6

富貴支所

Location

80-1 Aza-Gaimen Oaza-Fuki Taketoyo Town (Postcode: 〒470-2531)

Business Hours

8:30 a.m. to 5:15 p.m.

Closed

Sunday, Saturday, Public holidays, and the New Year holiday periods.

Information

Phone: 0569-72-0038 FAX: 0569-74-0805

Symbol of Taketoyo Town



Two katakana letters, "タ(ta)" and "ケ(ke)" from "Taketoyo" are placed together. A horizontal line runs through it to express the development of the town. Curved lines represent harmony, and the symbol as a whole stands for a flapping bird, which makes people associate it with a bright future.

Taketoyo Town Character Mark



With the motive of "Urashima Taro", a folkloric figure, the town's mark symbolizes **gentleness, friendliness, the riches of nature (ocean), vitality, and expansion into the future**. This character's name, "Yumetaro" was selected from 106 applications made by the public.

Flower of the Town



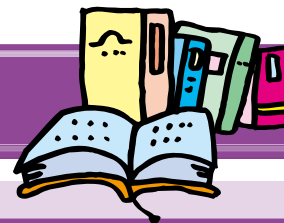
Sasanqua

Tree of the Town



Camphor tree

Culture and Education



Yumetaro Plaza (Community center) MAP G-6

ゆめたろうプラザ (町民会館)



Many people utilize the Yumetaro Plaza for various cultural and art activities. It is a “The Height of Creation”, where the people practice fertile lifelong learning and interchanges between different fields.

- **Location** 11 Aza-Daimonda Taketoyo town
- **Business Hours** 9:00 a.m. to 9:00 p.m.
* Rentable from 9:00 a.m. to 10:00 p.m.
- **Closed** Monday and the New Year holiday periods.
* Open on Monday if it is a public holiday. In this case, it is closed on the following weekday.
- **Information** Phone: 0569-74-1211

Library

MAP E-6

図書館



The library contains 190 thousand items including popular books, children’s books, newspapers, magazines, CDs, and videocassettes.

- **Location** 135-1 Aza-Yamanokami Taketoyo town
- **Business Hours** 10:00 a.m. to 6:00 p.m.
- **Closed** Monday, final Friday of each month, the New Year holiday periods, and May 4th.
- **Information** Phone: 0569-73-6800

Higashi-Odaka Children’s Hall MAP H-6

東大高児童館

- **Location** 1-1 Aza-Nakaikeshita
Oaza-Higashi-Odaka Taketoyo town
- **Information** Phone: 0569-73-3123

Nagao Children’s Hall MAP E-6

長尾児童館

- **Location** 135-1 Aza-Yamanokami
Taketoyo town
- **Information** Phone: 0569-73-4841

Kusunoki Children’s Hall MAP F-5

くすのき児童館

- **Location** 4-25 Aza-Kusunoki
Taketoyo town
- **Information** Phone: 0569-73-6500

Oashi Children’s Hall MAP F-7

おおあし児童館

- **Location** 78-1 Aza-Heikaido
Taketoyo town
- **Information** Phone: 0569-73-8181

Parent Support Center MAP C-6

子育て支援センター

- **Location** 1-43 Aza-Sunagawa
Taketoyo town
- **Information** Phone: 0569-73-8714

Central Community Center MAP E-6

中央公民館



This is a multipurpose space for group activities, lectures, and so on.

- **Location** 20-1 Aza-Yamanokami Taketoyo town
- **Business Hours** 8:30 a.m. to 5:00 p.m.
* Rentable from 8:30 a.m. to 9:00 p.m.
- **Closed** Monday, holidays and the New Year holiday periods.
* Open on Monday if it is a public holiday.
- **Information** Phone: 0569-73-2424

History and Folklore Museum MAP E-6

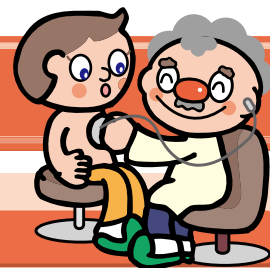
歴史民俗資料館



This museum was established to preserve historical, folklorish, and archaeological materials that show the development of Taketoyo for the future generations. The collection contains 50,000 items.

- **Location** 20-1 Aza-Yamanokami Taketoyo town
- **Business Hours** 9:00 a.m. to 5:00 p.m.
- **Closed** Monday, public holidays and the New Year holiday periods.
- **Information** Phone: 0569-73-4100

Welfare and Health



Public Health Center

MAP E-6

保健センター



This center provides health services for children and mothers, vaccinations, and actively promotes health in Taketoyo. The staff's aim is "Everyone can have a good life with a smile in Taketoyo".

- **Location** 4-83 Aza-Nakane Taketoyo town
- **Business Hours** 8:30 a.m. to 5:15 p.m
- **Closed** Sunday, Saturday, Public holidays, and the New Year holiday periods.
- **Information** Phone: 0569-72-2500

The Elderly Welfare Center

MAP K-2

老人福祉センター

The center has a meeting room, teahouse, bath, rehabilitation room, etc. The elderly make use of this center for activities and companionship.

- **Location** 1-2 Aza-Gonbeishinden Oaza-Fuki Taketoyo Town
- **Accessible to** Residents of Taketoyo Town older than 60 years old or members of the "Roujin Club" (Elderly club)
- **Business Hours** 9:00 a.m. to 4:00 p.m.
- **Charge** Free
- **Closed** Sunday, Public holidays (Except the "Respect-for-the-Aged Day"), and the New Year holiday periods.
- **Information** Phone: 0569-73-4010



Social Welfare Council

MAP E-6

社会福祉協議会

The council provides social welfare services efficiently, promotes organized activities and tries to improve social welfare in Taketoyo. It also makes projects for social welfare and helps residents to participate in these projects.

- **Location** 2 Aza-Nagaoyama Taketoyo town
- **Business Hours** 8:30 a.m. to 5:15 p.m.
- **Closed** Sunday, Saturday, Public holidays, and the New Year holiday periods.
- **Information** Phone:0569-73-3104

Silver Senior Human Resources Center MAP F-7

シルバー人材センター

- **Location** 76-1 Aza-Heikaidou Taketoyo town
- **Information** Phone: 0569-73-4355

Oashi Senior Citizens House MAP F-8

大足老人憩の家

- **Location** 10-1 Aza-Kawawaki Taketoyo town
- **Information** Welfare Section (Fukushi-ka) of Town Office
Phone: 0569-72-1111

Tamanuki Senior Citizens House MAP F-5

玉貫老人憩の家

- **Location** 4-24-1 Aza-Kusunoki Taketoyo town
- **Information** Welfare Section (Fukushi-ka) of Town Office
Phone: 0569-72-1111

Taga Work Center

MAP F-4

多賀授産所

This workshop is a place mainly for the people who are cognitively challenged to work with proper support. They produce and sell young flowering plants, mats and paper wares made of handmade paper. They also sell roasted coffee beans after packing them into bags. They do internships at companies with the aim of being employed.

- **Location** 4-1 Aza-Taga Taketoyo town
- **Information** Phone: 0569-73-5821



Disaster Prevention and Environment

Handa Fire Fighting Station, Taketojo Branch MAP E-7

半田消防署武豊支署

They carry out fire fighting, disaster prevention, ambulance and rescue duties.

■ **Location** 50 Aza-Nagaoyama Taketojo town

■ **Information** Phone: 0569-73-0119



Handa Police Office, Taketojo Police Box MAP F-7

半田警察署武豊交番

They work to decrease crime and traffic accidents. They advise on crime, and make better surroundings for a safer life. Taketojo also has the Rokkanyama Residential Police Box and the Fuki Residential Police Box.

■ **Location** 129-1 Aza-Mukaedo Taketojo town

■ **Information** Phone: 0569-21-0110



Clean Center Tokotake MAP B-3

クリーンセンター常武

Large sized trash, burnable and non-burnable trash from Taketojo and Tokoname are collected and disposed here.

■ **Location** 27 Aza-Icchoda Taketojo town

■ **Business Hours**

Monday to Friday 8:30 a.m. to 11:30 a.m.

1:00 p.m. to 3:30 p.m.

Saturday 8:30 a.m. to 11:30 a.m.

■ **Closed** every third Saturday, Sunday, and the New Year holiday periods.

■ **Information** Phone: 0569-72-0530



Central Chita Sanitary Organization

MAP B-3

中部知多衛生組合

Human waste collected in Taketojo, Hanada, and Tokoname is treated here.

■ **Location** 90-10 Aza-Icchoda Taketojo town

■ **Information** Phone: 0569-72-0876

